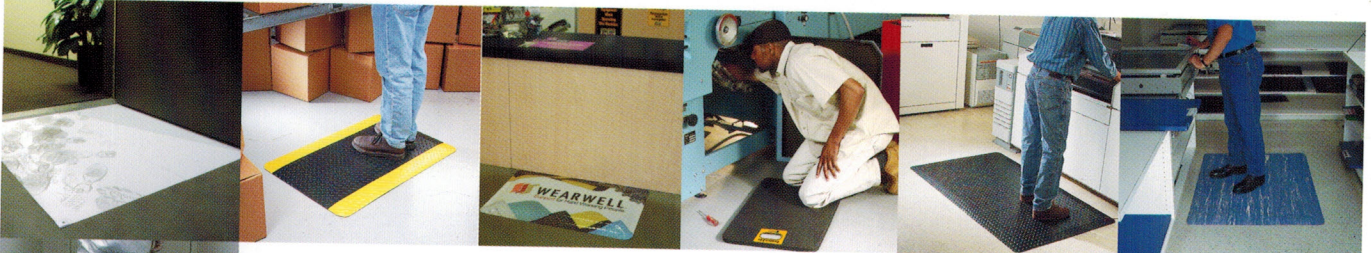


# Common Applications Product Guide

We tried to put together a diagram of a building that showed all the different applications for Wearwell ergonomic matting and flooring. But in the end, Wearwell products support hardworking people in such a wide variety of facilities, markets and applications that it just wasn't practical. So instead, we thought you might find useful this quick reference to just a few of our most common applications.



## Assembly Lines

- Diamond-Plate SpongeCote®
- Rejuvenator®
- ErgoDeck®

## Metals Machining

- 24/Seven® w/GritWorks!®
- Industrial GritWorks!®
- WorkSafe®

## Quality Control & Poorly Lit Spaces

- LightWorks
- Tile-Top AM
- ErgoDeck® White

## Cashier Stations

- InVision
- SMART® Tile-Top
- SubStance
- Rejuvenator®

## Baggage Handling

- ErgoDeck®
- 24/Seven®
- F.I.T.™ Functional Interlocking Tiles

## Restaurant Kitchens

- Grade "A"®
- WorkRite
- Modular WorkSafe® Light

## Ticket & Gate Counters

- InVision
- Diamond-Plate SpongeCote®
- Rejuvenator®
- Tile-Top AM

## Pharmacies & Medical Laboratories

- Tile-Top AM
- Pur-Comfort
- Rejuvenator®

## Electronic Equipment Assembly

- Electrically Conductive Anti-Fatigue
- Pur-Comfort
- Clean Room Mat

## Operating Rooms & Surgery Centers

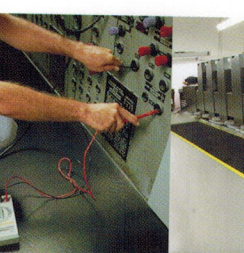
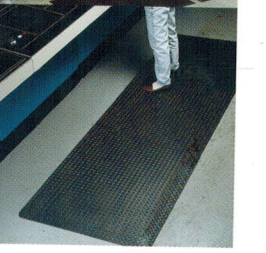
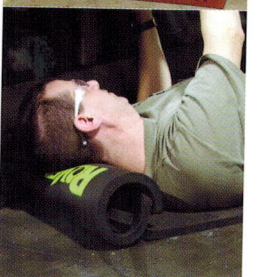
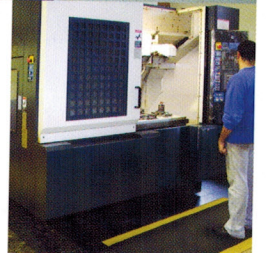
- Autoclavable Mat
- Pur-Comfort
- Tile-Top AM

## Data-Recovery & Clean Rooms

- Pur-Comfort
- Clean Room Mat
- PermaTack

## Hallways & Aisles

- Standard Corrugated Vinyl Runner
- KleenSweep Runner
- Clean Room Mat



*If your application(s) is/are not listed, please contact a Wearwell Sales Professional to assist in your selection process.*